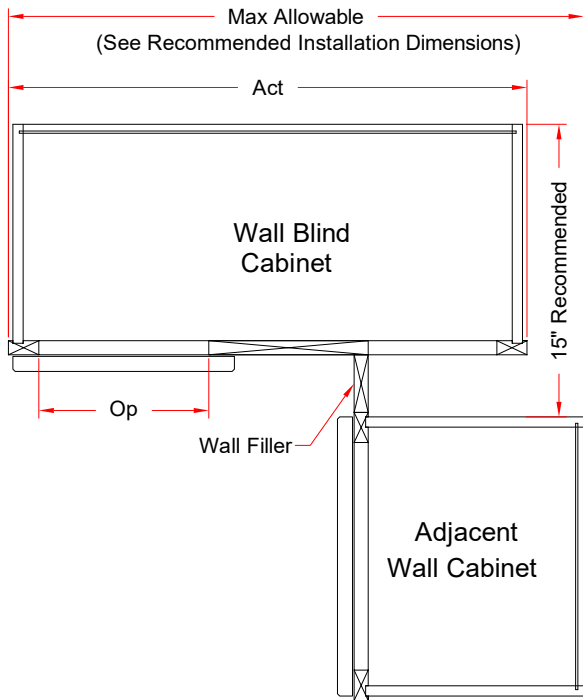
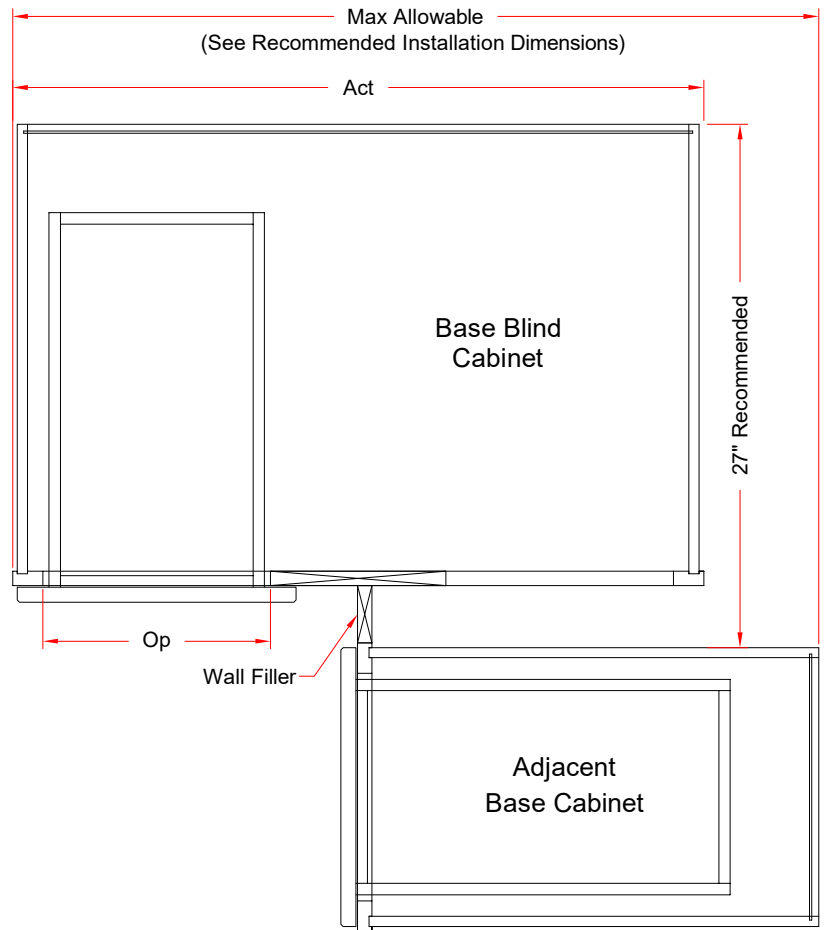


Blind Pull Specification

WALL TOP VIEW



BASE TOP VIEW



BLIND CABINET DIMENSIONS:

Cabinet	Act	Rec Inst	Max	Op
Wall Blind W3030BC	27"	27"-30"	30"	8-7/8"
Wall Blind W3036BC	27"	27"-30"	30"	8-7/8"
Wall Blind W3042BC	27"	27"-30"	30"	8-7/8"
Base Blind B42BC	36"	43"-45"	46"	11-13/16"

RECOMMENDED INSTALLATION DIMENSIONS:

B42BC must be a minimum of 6" from the corner when installed.

LEGEND

Act.....Represents the Actual width of the cabinet.

Rec Inst....Represents the Recommended Installation dimensions.

Max.....Represents the absolute Maximum distance the cabinet and pull from the wall can take up INCLUDING any additional pull for hardware and/or for full overlay styles.

Op.....Represents the actual width of the door Opening.

Notes:

All blind bases must be pulled from the wall; see Recommended Installation dimensions.

For Standard overlay with hardware use the Recommended Installation dimensions.

To maintain equal 3" reveal on blind cabinet, to match adjacent 3" reveal on filler, always order planned installation dimension to match highest Recommended Installation dimension.

Filler Sold separately.